

ADJUSTABLE SCALES



SWISS READING SYSTEM



DATAmet MULTIFUNCTIONAL ROUND 1.8" TOUCHSCREEN DISPLAY

- Industry 4.0 adopted DataMet indicator with 1.8" color Round Touchscreen computerized MICS system
- Sub-micron SWISS made reading system resolution 0.2 micron (0,0002/0,001/0,01/0,1mm selection)
- Color adjustable Scales: Analog, Comparator, Digital
- Measuring ranges up to 0-200mm (0-8")
- For using in precision bore gauges, thickness gauges, measuring stands and custom solutions.
- Functions: Go/NoGo, Max/Min, Formula, Timer, Linear correction, Temperature correction, Resolution selecting, Connection status
- Memory manager: 50000 values, Memory data transfer
- 4 MODES DATA TRANSFER: WIRELESS to MDS app (Windows, Android, iOS, MacOS); WIRELESS HID, WIRELESS HID+MAC, USB HID
- Calibration certificate included (ISO17025 (Ilac MRA))

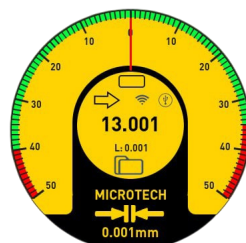
## DATAmet FUNCTIONS



ANALOG SCALE



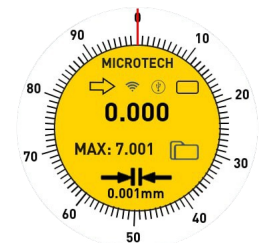
ANALOG BLACK SCALE



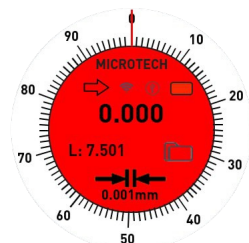
COMPARATOR SCALE



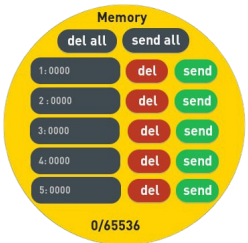
DIGITAL SCALE



MAX / MIN / RANGE



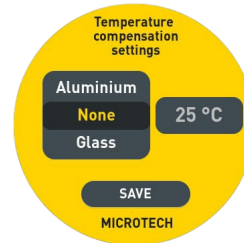
COLOR GO / NOGO



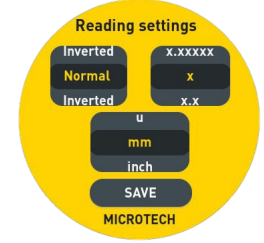
MEMORY 65500 values



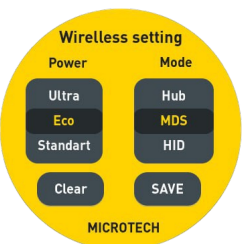
TIMER



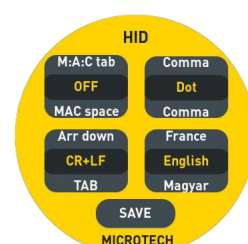
TEMPERATURE COMPENSATION



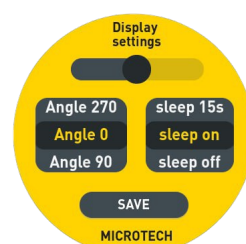
RESOLUTION, mm/inch



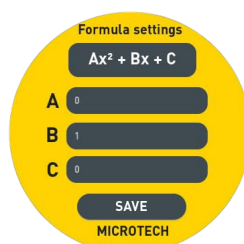
MICROTECH



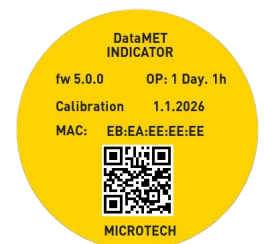
MICROTECH



MICROTECH

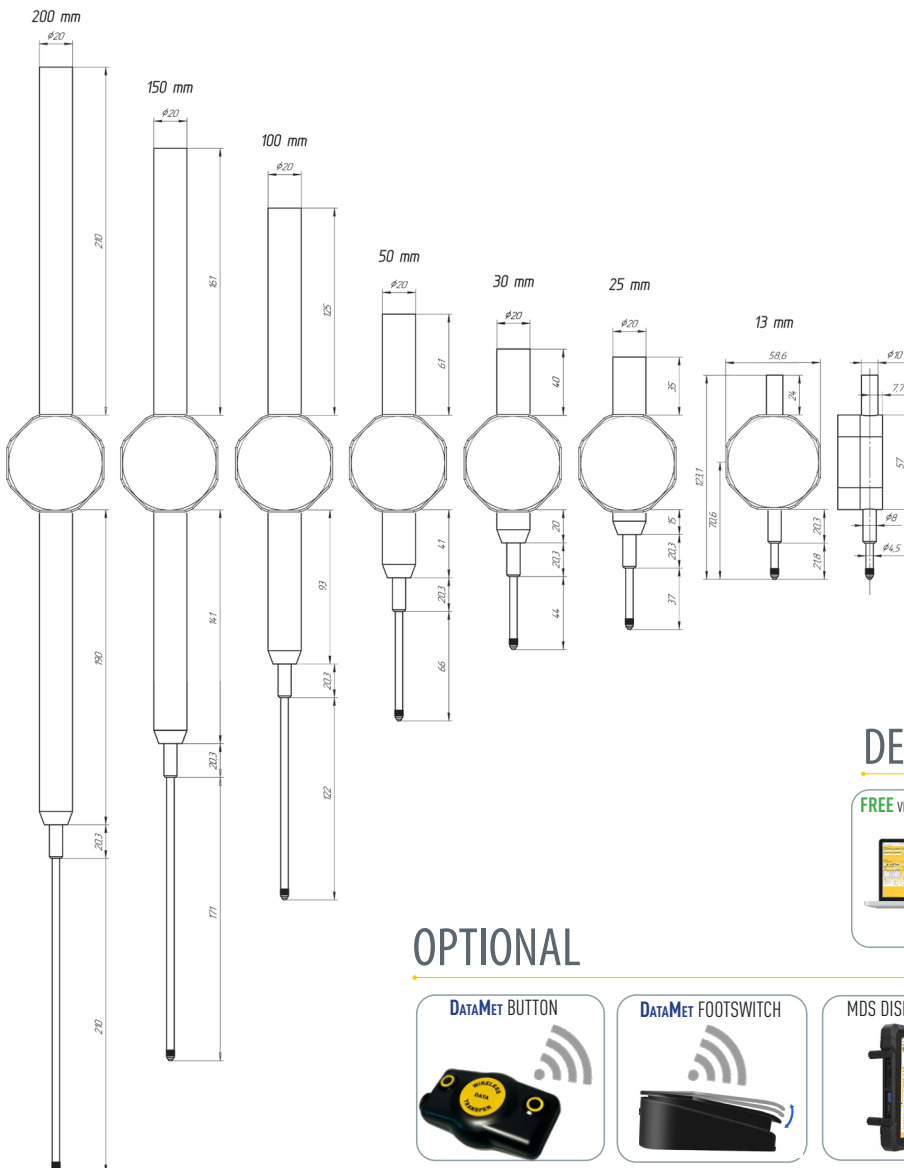


MICROTECH



MICROTECH

Item No	Range		Resol.	Accu- racy	Hyste- resis	Force	Preset	Go/NoGo	Max/Min	Formula	Timer	Temp comp	Linear corr	Calibr date	FW update	Recharge	Memory	WIRELESS	USB							
	mm	inch																		mm	µm	µm	N			
120137133	0-12.5	0-0.5"	0,0002	±3	0,5	0,6-1	•	•	•	•	•	•	•	•	•	•	50000 val	Long range / HID	USB HID / Update							
120137135				±2			•	•	•	•	•	•	•	•	•	•				•						
120137136				±1.5			•	•	•	•	•	•	•	•	•	•				•	•					
120137138				±1.0			•	•	•	•	•	•	•	•	•	•				•	•					
120137253	0-25,4	0-1"		±3		0,7-1.2	•	•	•	•	•	•	•	•	•	•				•	•	•	•	•		
120137255				±2			•	•	•	•	•	•	•	•	•	•				•	•	•	•	•	•	
120137256				±1.5			•	•	•	•	•	•	•	•	•	•				•	•	•	•	•	•	•
120137303	0-30	0-1.2"		±3		0,7-1.2	•	•	•	•	•	•	•	•	•	•				•	•	•	•	•		
120137305				±2			•	•	•	•	•	•	•	•	•	•				•	•	•	•	•	•	•
120137502	0-50,8	0-2"		±5		1,2-2,2	•	•	•	•	•	•	•	•	•	•				•	•	•	•	•		
120137503				±3			•	•	•	•	•	•	•	•	•	•				•	•	•	•	•	•	•
120137505				±2			•	•	•	•	•	•	•	•	•	•				•	•	•	•	•	•	•
120137902	0-100	0-4"		±5		3,2-5,2	•	•	•	•	•	•	•	•	•	•				•	•	•	•	•		
120137903				±3			•	•	•	•	•	•	•	•	•	•				•	•	•	•	•	•	•
120137952	0-150	0-6"		±7		3,2-5,2	•	•	•	•	•	•	•	•	•	•				•	•	•	•	•		
120137953				±4			•	•	•	•	•	•	•	•	•	•				•	•	•	•	•	•	•
120137962	0-200	0-8"	±9	3,2-5,2	•	•	•	•	•	•	•	•	•	•	•	•	•	•	•							
120137963			±5		•	•	•	•	•	•	•	•	•	•	•	•	•	•	•	•	•	•				



**DOWNLOAD**  
MDS app WINDOWS

**DOWNLOAD**  
MDS app iOS, MacOS

**DOWNLOAD**  
MDS app ANDROID

**DataMet**  
interface

**CONNECTION**  
possibilities

### DELIVERY SET

FREE VERSIONS OF MDS APP

CALIBRATION PROTOCOL

USB DATA/CHARGING CABLE

### OPTIONAL

DATA MET BUTTON

DATA MET FOOTSWITCH

MDS DISPLAY UNIT

MDS SOFTWARE

STANDARD MDS app

STANDS