



3-POINT HEAD

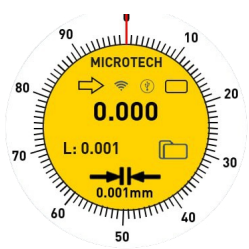
DataMet MULTIFUNCTIONAL ROUND 1.8" TOUCHSCREEN DISPLAY



SWISS READING SYSTEM



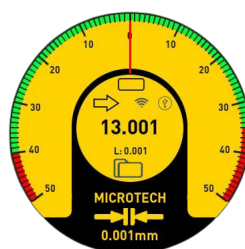
DATAmet FUNCTIONS



ANALOG SCALE



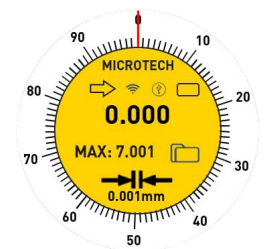
ANALOG BLACK SCALE



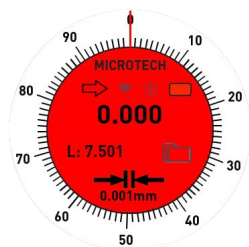
COMPARATOR SCALE



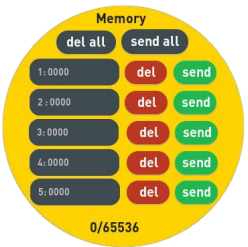
DIGITAL SCALE



MAX / MIN / RANGE



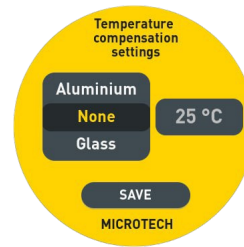
COLOR GO / NOGO



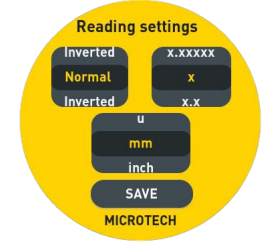
MEMORY 65500 values



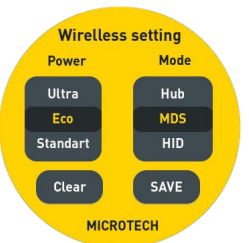
TIMER



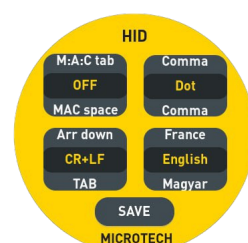
TEMPERATURE COMPENSATION



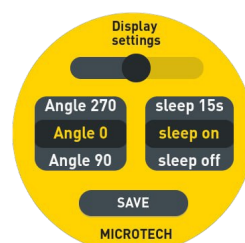
RESOLUTION, mm/inch



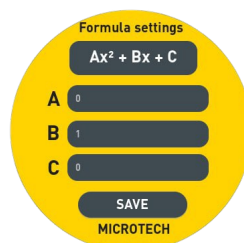
MICROTECH



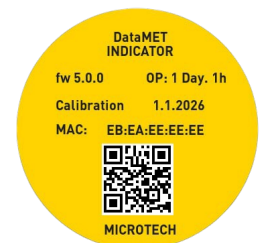
MICROTECH



MICROTECH



MICROTECH



MICROTECH

- Industry 4.0 adopted **DataMet** Pistol grip bore gauge with computerized MICS system
- Sub-micron **SWISS made reading system** resolution **0.2 micron** (0,0002/0,001/0,01/0,1mm selection)
- Color adjustable Scales: Analog, Comparator, Digital
- **Functions:** Go/NoGo, Max/Min, Formula, Timer, Linear correction, Temperature correction, Resolution selecting, Connection status
- **Memory manager:** **65000 values**, Statistics mode, Memory data transfer
- **Functions:** Go/NoGo, Max/Min, Formula, Timer, Linear correction, Temperature correction, Resolution selecting, Connection status
- **Memory manager:** 2000 values, Folders system, Statistics mode, Memory data transfer
- **4 MODES DATA TRANSFER:** WIRELESS to MDS app (Windows, Android, iOS, MacOS); WIRELESS HID, WIRELESS HID+MAC, USB HID
- Calibration certificate included (ISO17025 (Ilac MRA))

DataMet PISTOL GRIP BORE GAUGE

Item No	Range		Resol.	Accur.	Setting rings	Max depth	Preset	Go/NoGo	Max/Min	Formula	Timer	Temp comp	Linear corr	Calibr date	Recharge	Memory	WIRELESS	USB		
	mm	inch																	mm	µm
133500810	6-8	0.25-0.32"	0,0002	±3	•	50+100	•	•	•	•	•	•	•	•	•	Folders / 50000 val	Long range / HID	USB HID / Update		
133501010	8-10	0.32-0.4"		±3	•	50+100	•	•	•	•	•	•	•	•	•				•	
133501210	10-12	0.4-0.5"		±3	•	50+100	•	•	•	•	•	•	•	•	•				•	
133501610	12-16	0.5-0.63"		±3	•	65+150	•	•	•	•	•	•	•	•	•				•	
133502010	16-20	0.63-0.8"		±3	•	65+150	•	•	•	•	•	•	•	•	•				•	
133502510	20-25	0.8"-1"		±3	•	91+150	•	•	•	•	•	•	•	•	•				•	
135303010	25-30	1-1.2"		±3	•	91+150	•	•	•	•	•	•	•	•	•				•	
133504010	30-40	1.2-1.6"		±3	•	97+150	•	•	•	•	•	•	•	•	•				•	
133505010	40-50	1.6-2"		±4	•	97+150	•	•	•	•	•	•	•	•	•				•	
133506310	50-63	2-2.5"		±4	•	112+150	•	•	•	•	•	•	•	•	•				•	
133507510	62-75	2.5-3"		±4	•	112+150	•	•	•	•	•	•	•	•	•				•	
133508810	75-88	3-3.5"		±4	•	112+150	•	•	•	•	•	•	•	•	•				•	
133510010	87-100	3.5-4"		±4	•	112+150	•	•	•	•	•	•	•	•	•				•	
133512510	100-125	4-5"		±4	option	130+150	•	•	•	•	•	•	•	•	•				•	
133515010	125-150	5-6"		±4		130+150	•	•	•	•	•	•	•	•	•				•	•
133517510	150-175	6-7"		±4		130+150	•	•	•	•	•	•	•	•	•				•	•

DataMet PISTOL GRIP BORE GAUGE SET

Item No	Range		Measuring heads	Setting rings	Max depth
	mm	inch			
133570612	6-12	0.25-0.5"	3pcs	3pcs	50+100
133571220	12-20	0.5-0.8"	2pcs	1pcs	65+150
133572050	20-50	0.8-2"	4pcs	2pcs	91+150
133575090	50-100	2-4"	4pcs	2pcs	65+150
133579130	6-150	0.25-6"	15pcs	up to 100mm	



DELIVERY SET

FREE VERSIONS OF MDS APP

USB DATA/CHARGING CABLE

CALIBRATION PROTOCOL

SETTING RING

OPTIONAL

DATA MET BUTTON

DATA MET FOOTSWITCH

MDS DISPLAY UNIT

MDS SOFTWARE

STANDARD MDS app

